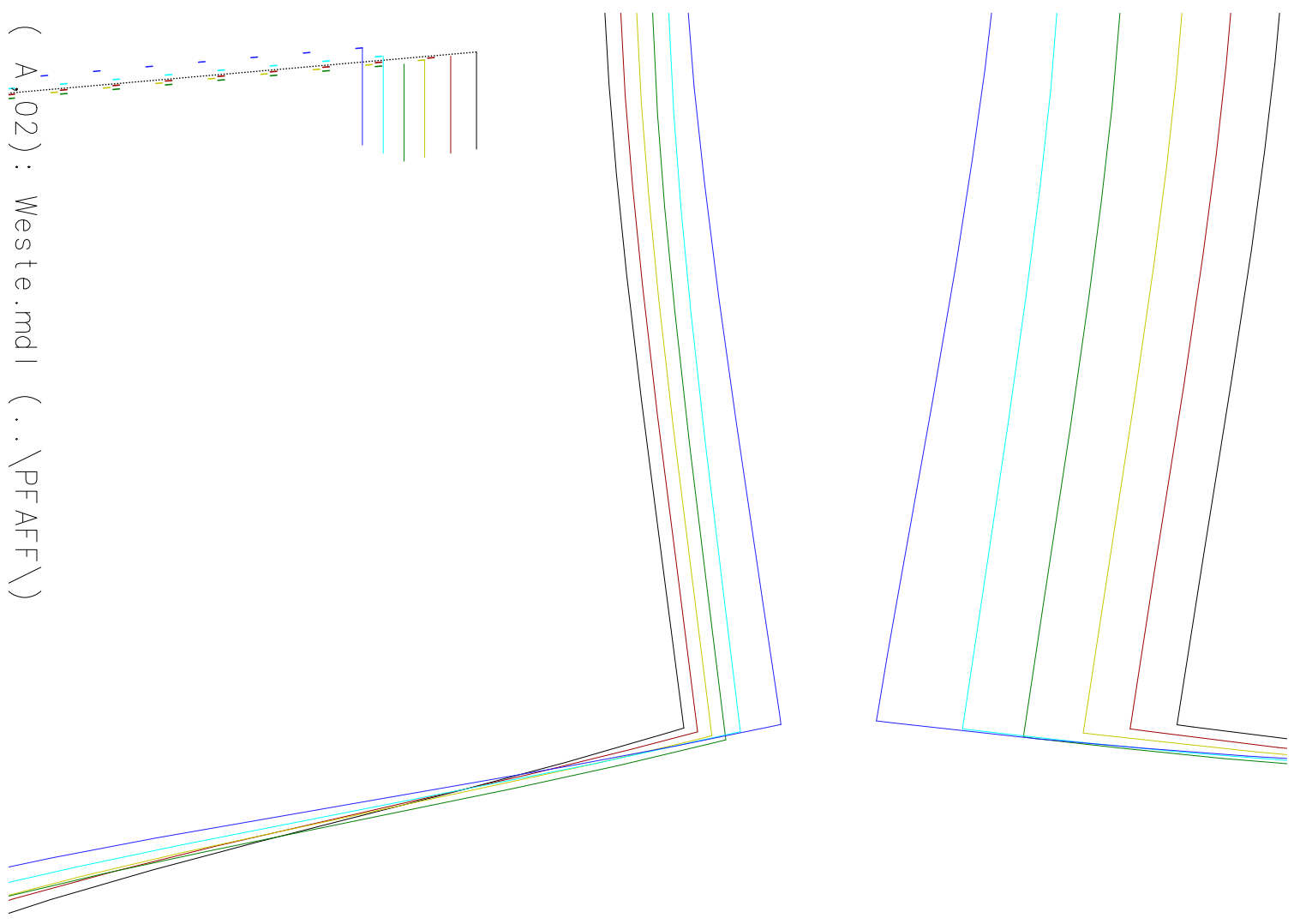
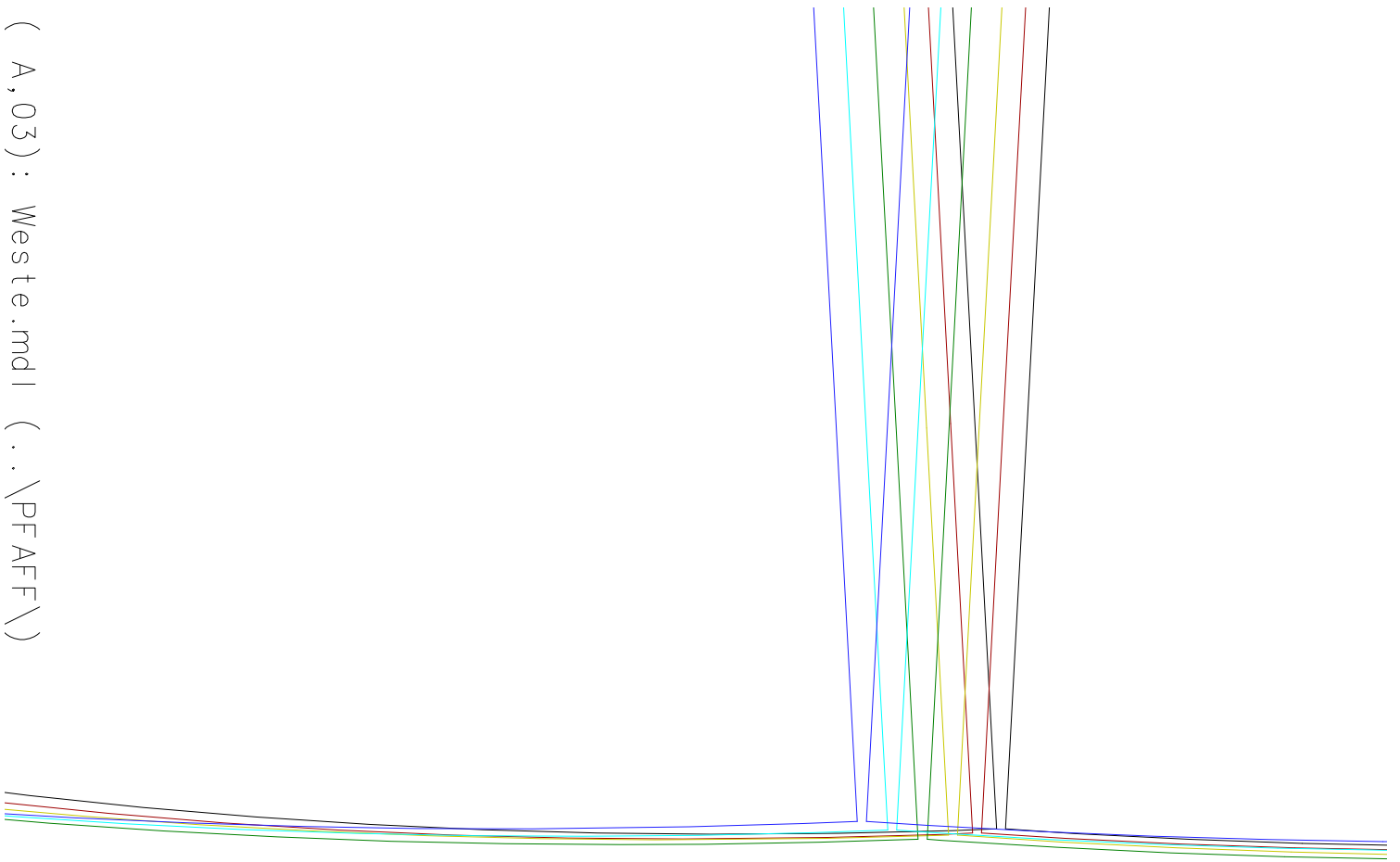


(A, 01) : Weste.mdl (.. \PFAFF \)

(A,02) : Weste.mdl (.. \PFAFF \)



(A, 03) : Weste.mdl (.. \PFAFF \)



(A, 04) : Weste.mdl (.. \PFAFF\)



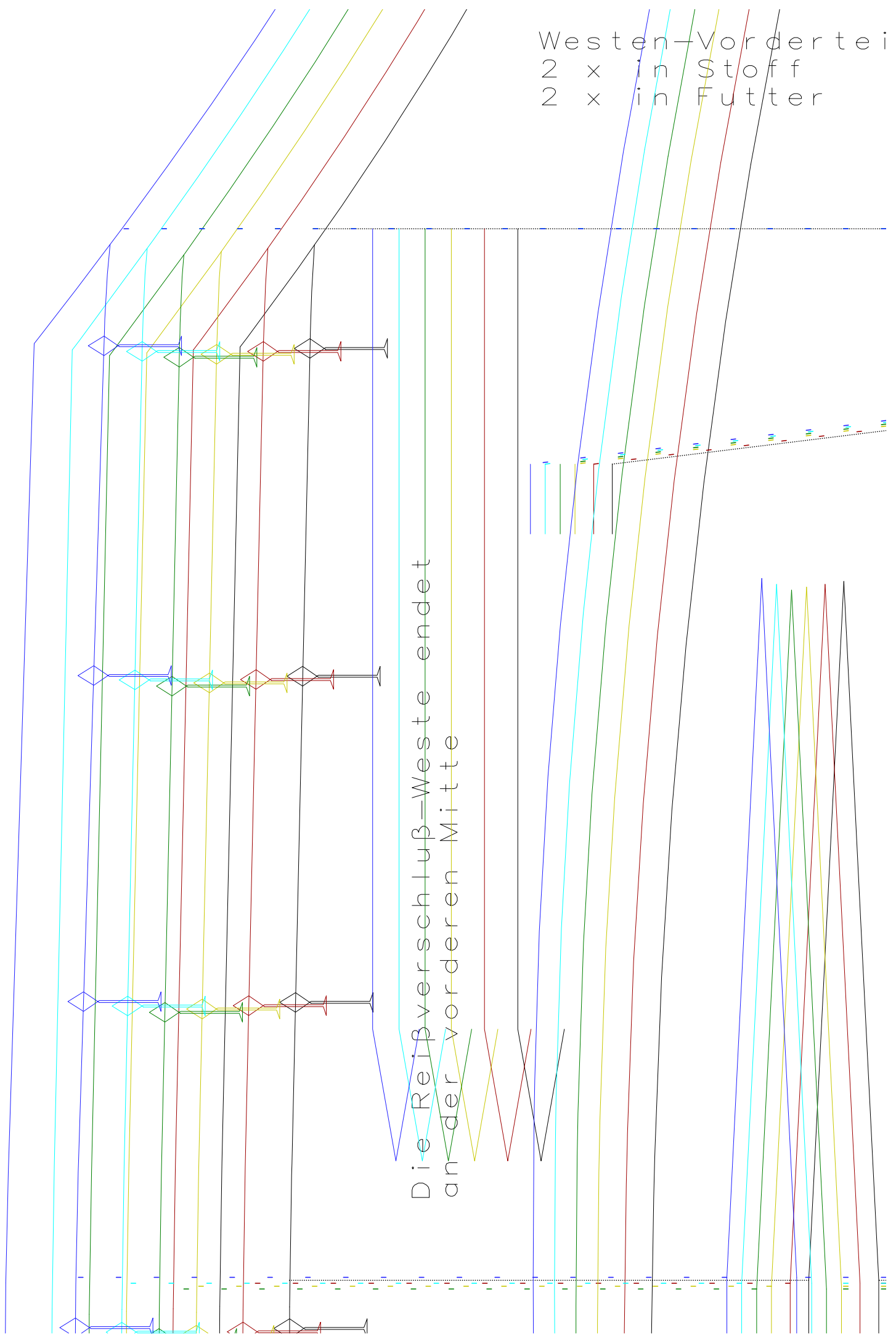
(A,05): Weste.mdl (... \PF-AFF \)



Farblinien für die Größen:
Gelb — 46
Rose — 48
Lila — 50
Blau — 52
Türkis — 54
Grün — 56

(B,01) : Weste.mdl (.. \PFAFF \)

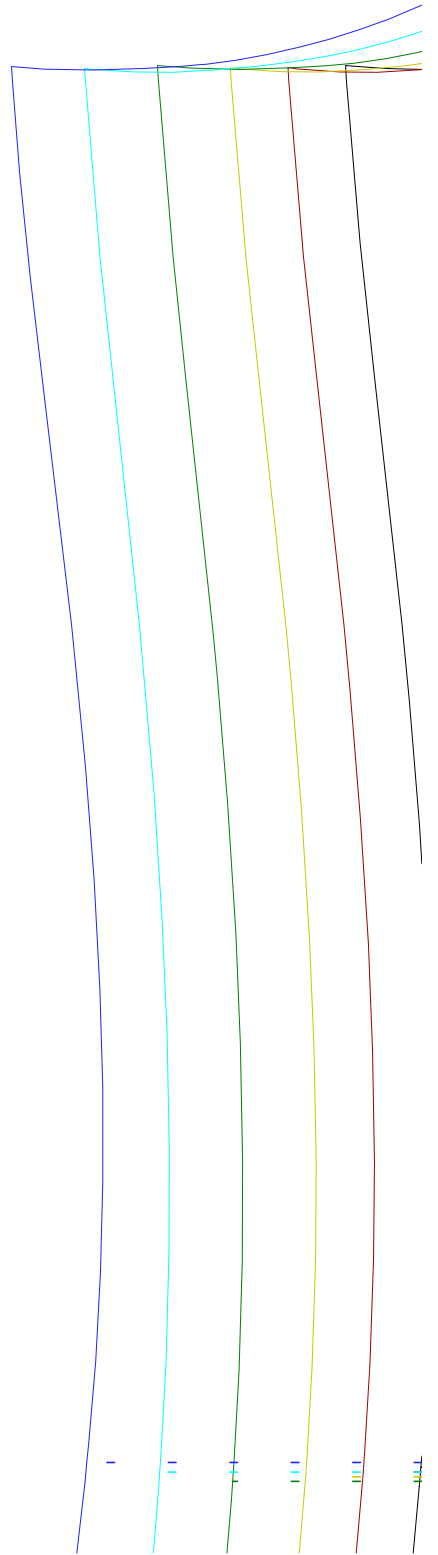
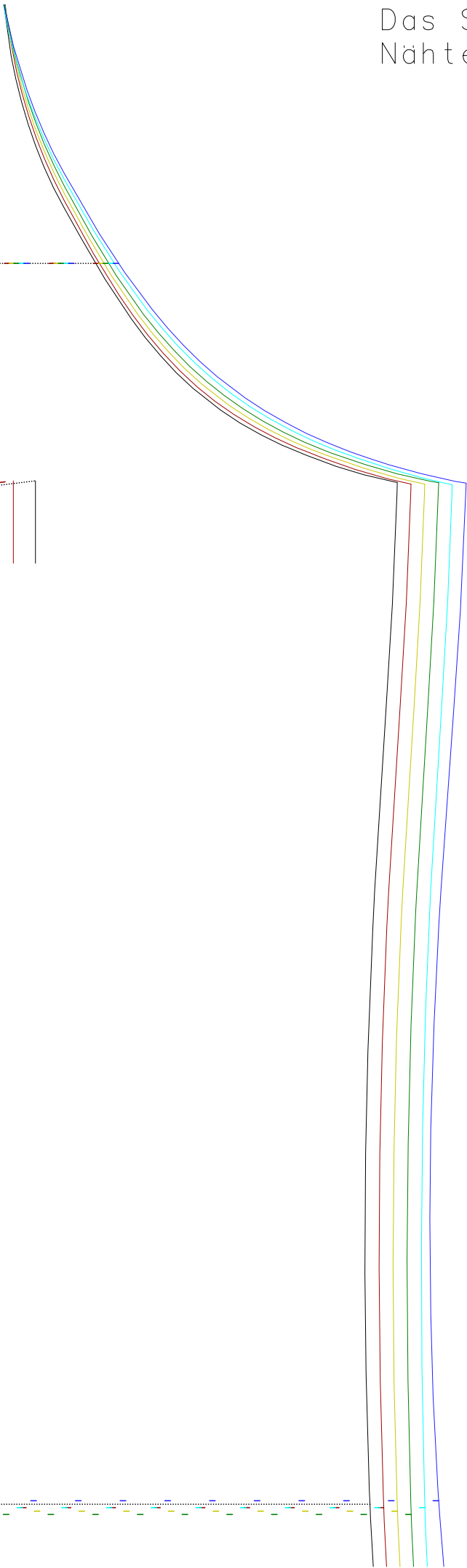
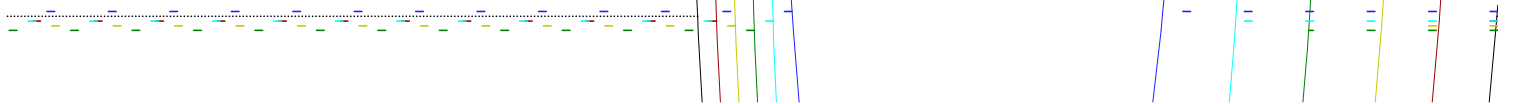
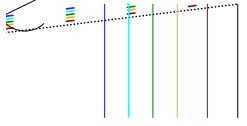
Westen-Vorderteil
2 x in Stoff
2 x in Futter



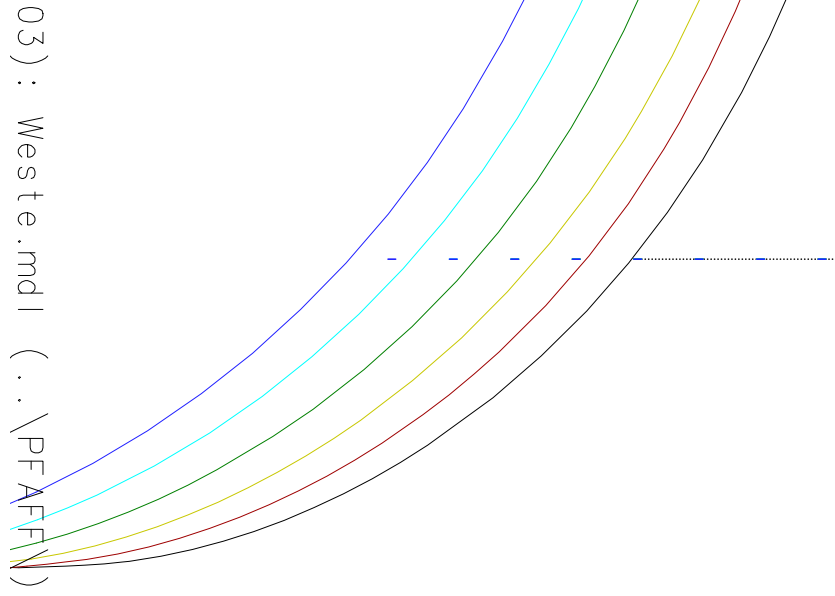
Die Reißverschluss=Weste endet
an der vorderen Mitte

Das Schnittmuster ist ohne Naeh- und Saume mussen zugege-

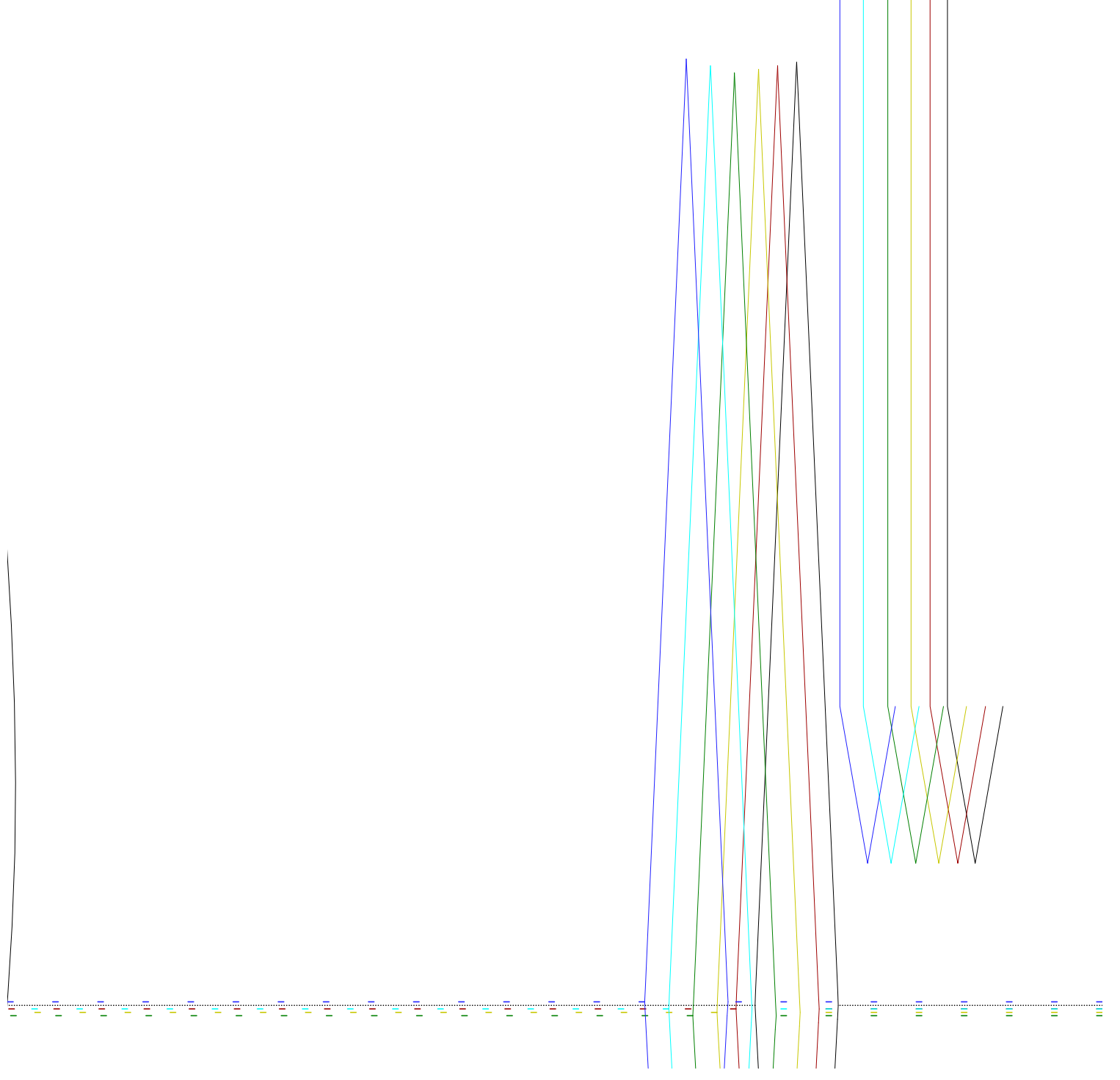
(T_B, 02) : Weste.mxl (... \PF AFF \



Stzugabe!
en werden!

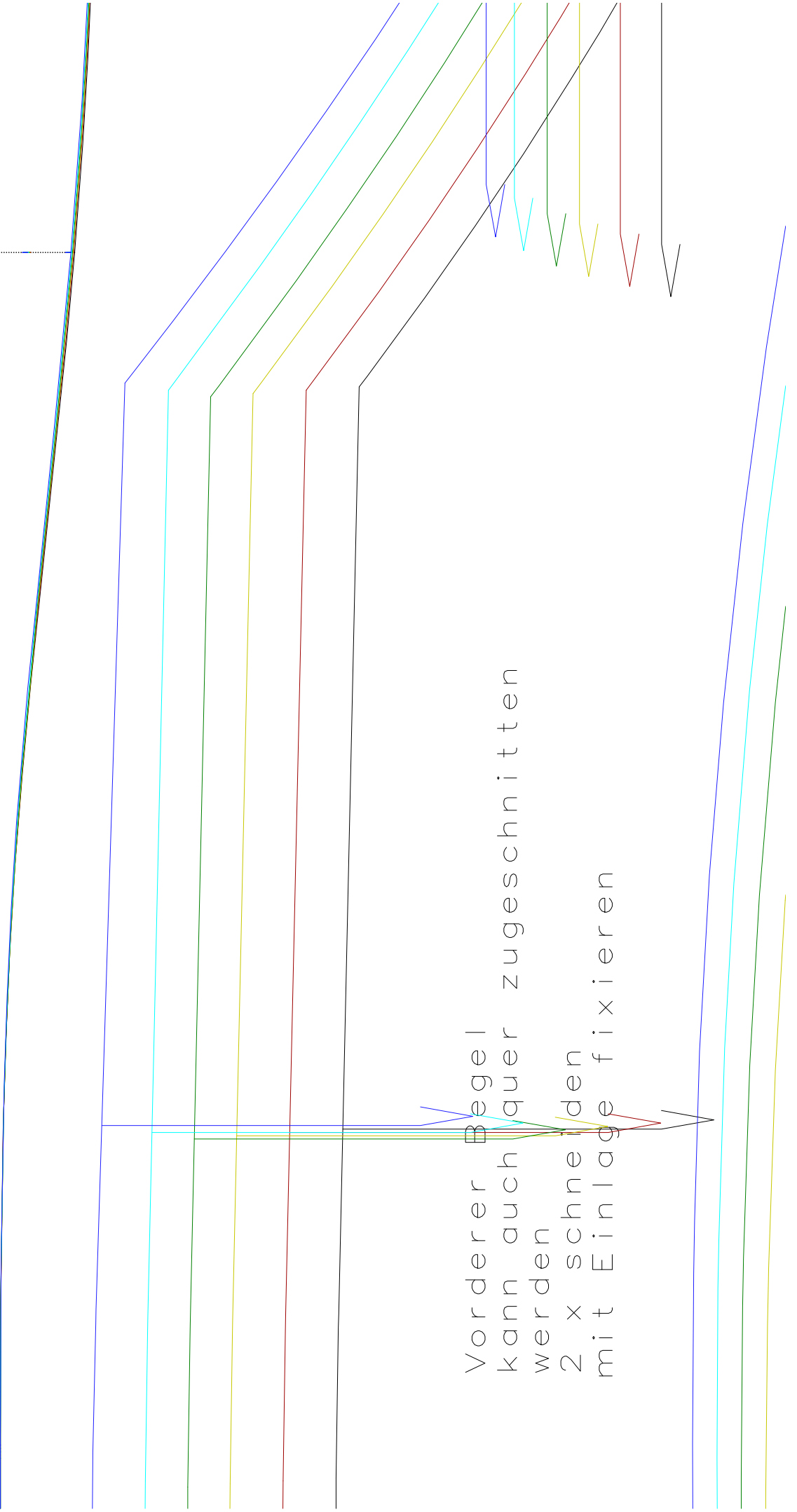


westen rücken
mit Naht in der hi
2 x in Stoff
2 x in Futter

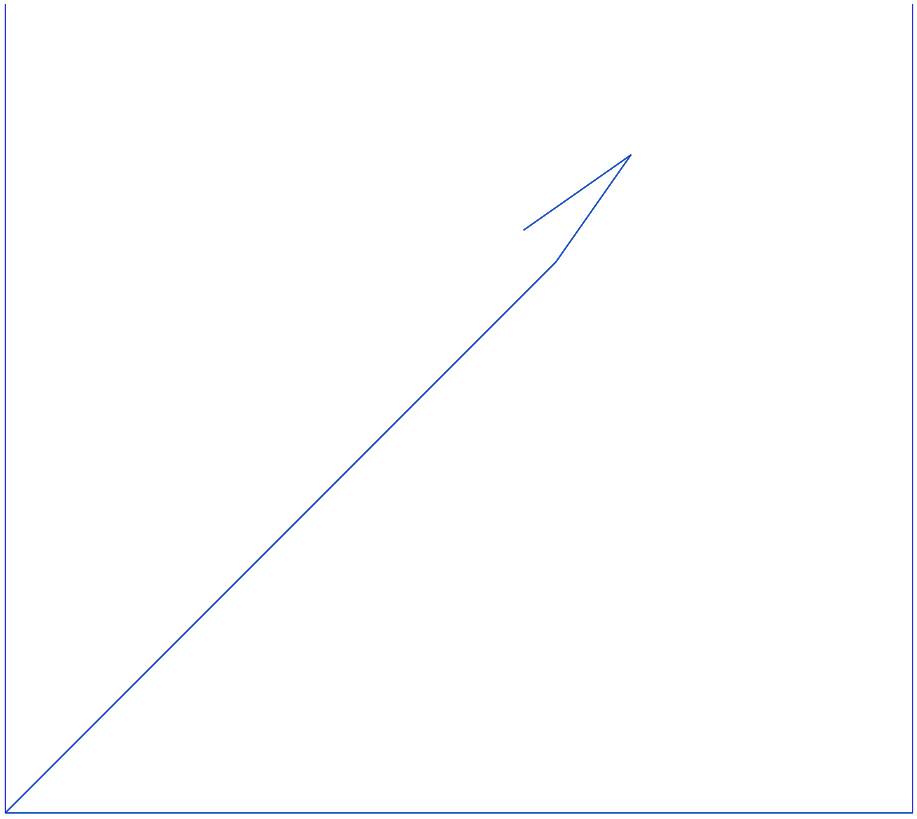


(EB, 04) : Weste.indl (... \PFAFF\)
teren Mitte

...

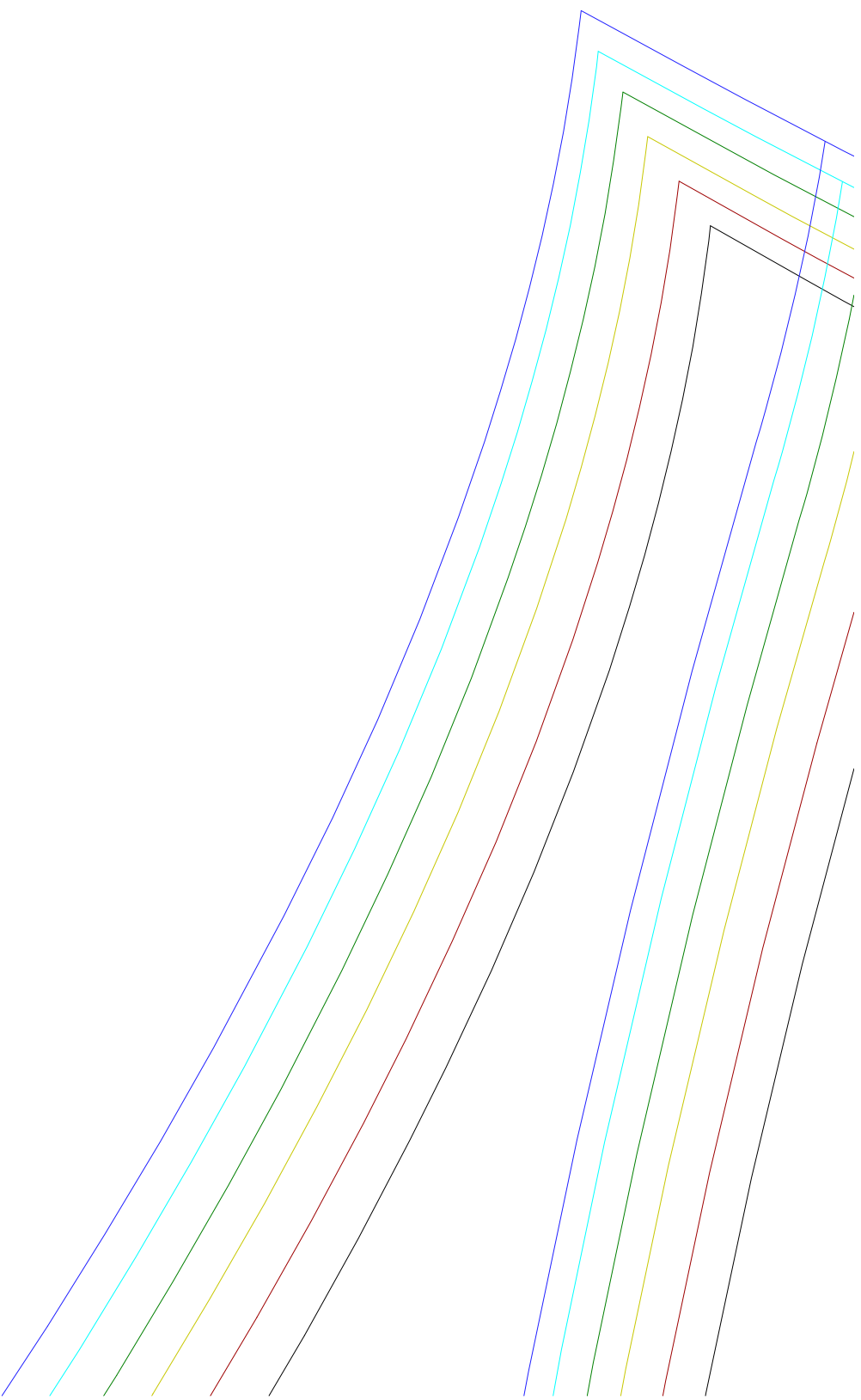


Vorderer Beleg
kann auch quer zugeschnitten
werden
2 x schneiden
mit Einlage fixieren



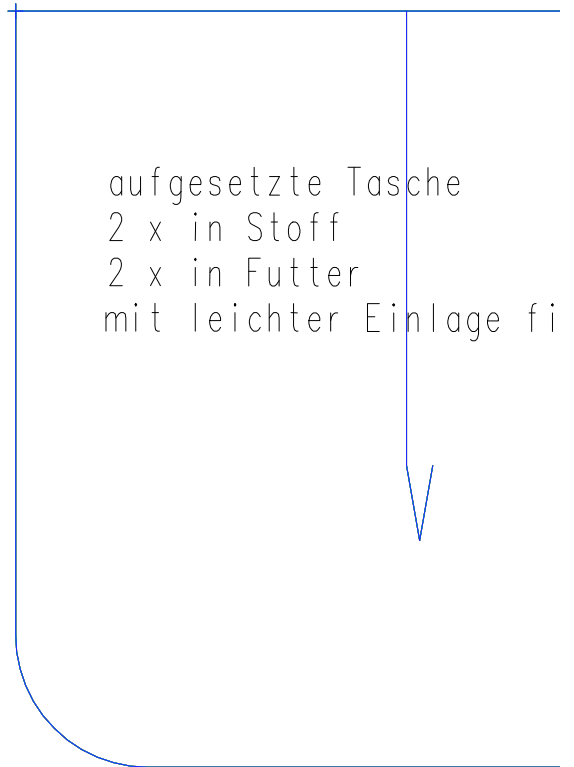
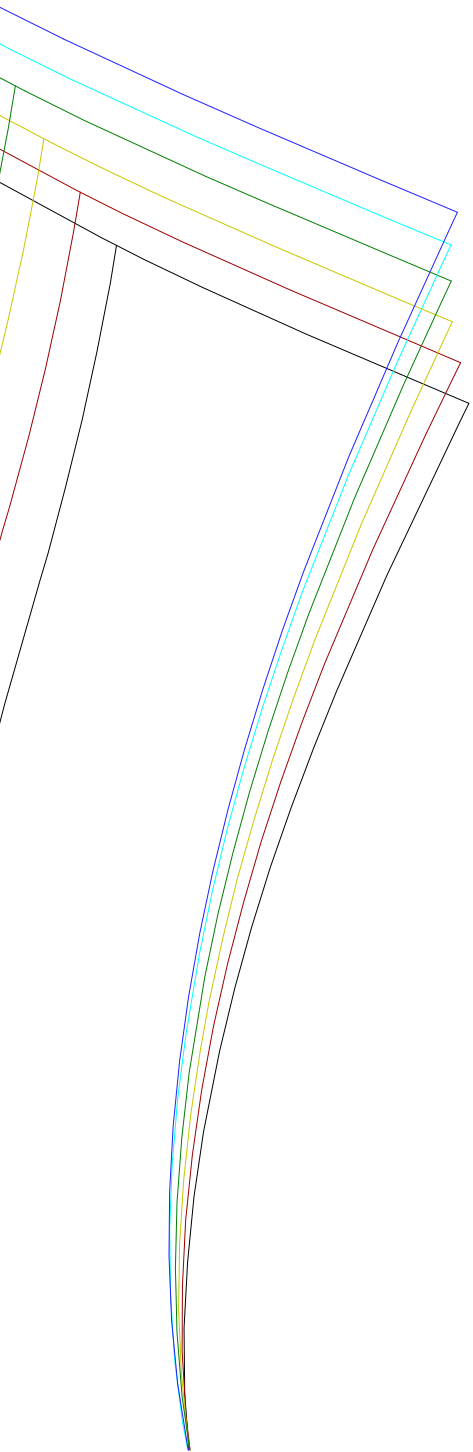
(B,05) : Weste.mdl (... \PFATF\)

Taschenbeutel
1 x in Futter
1 x in Stoff



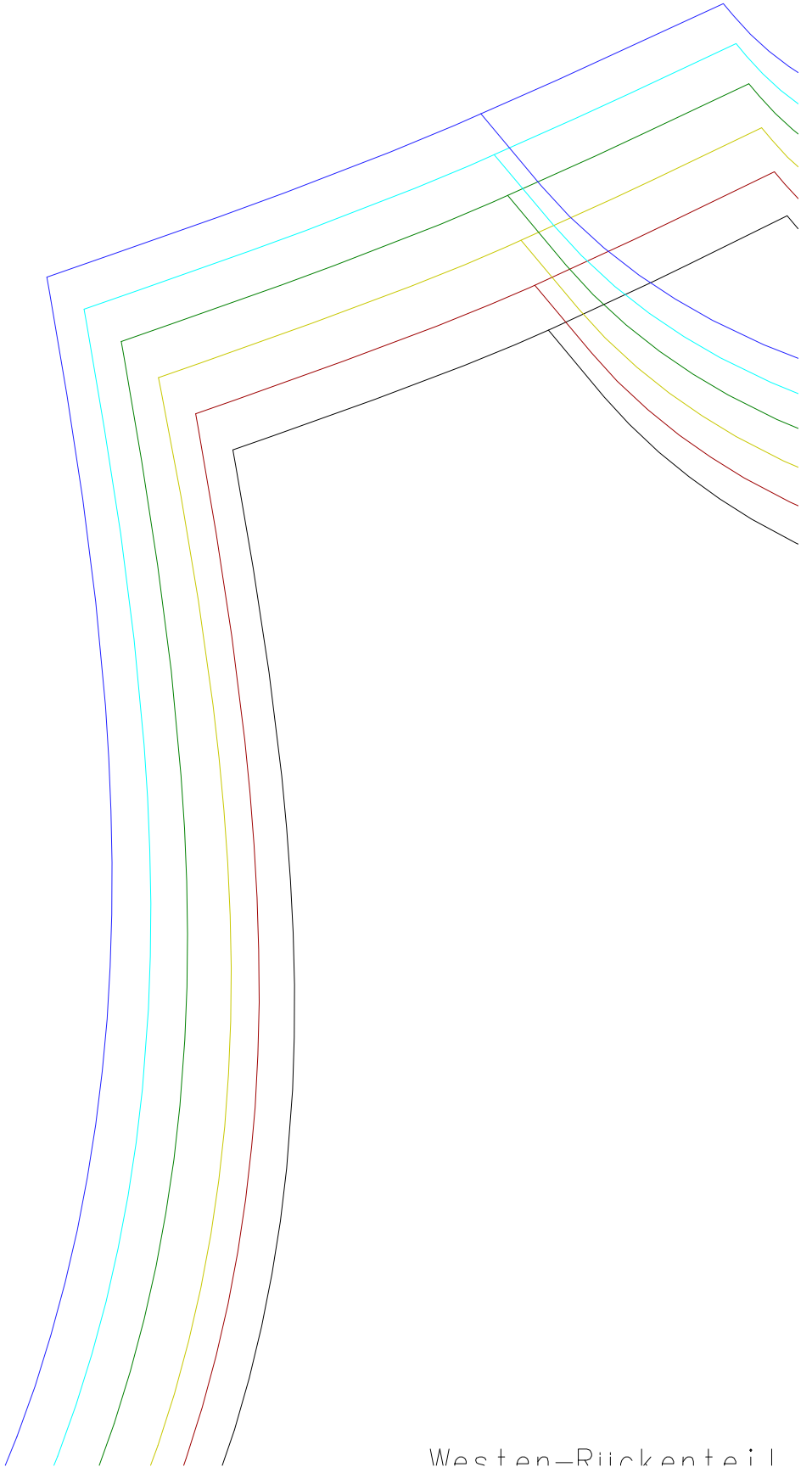
(C,01) : Weste.mdl (.. \PFAFF \)

(C, 02) : Weste.mdl (.. \PFAFF \)



aufgesetzte Tasche
2 x in Stoff
2 x in Futter
mit leichter Einlage fi

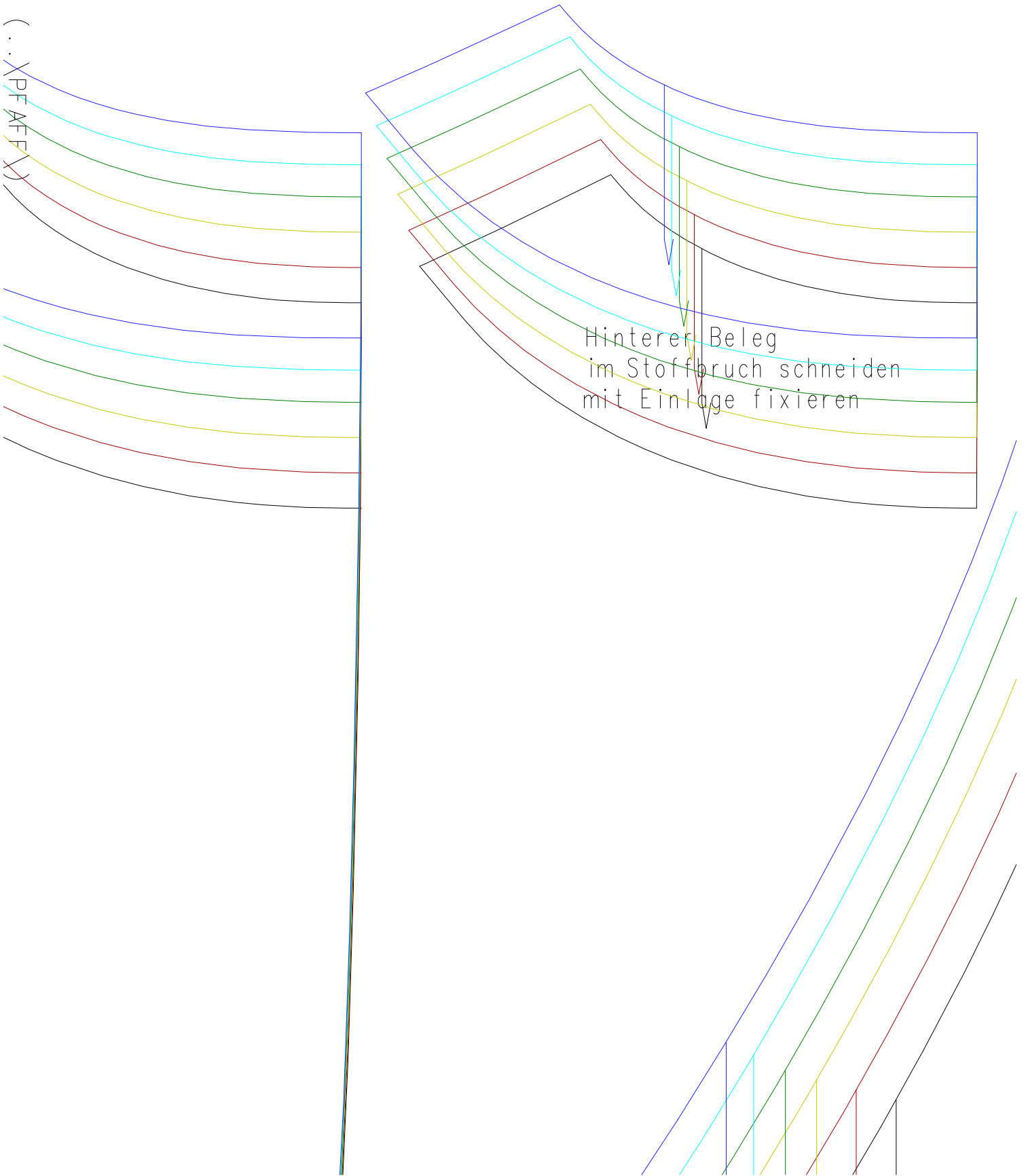
(C, 03) : Weste.mdl (.. \PFAFF \)



xieren

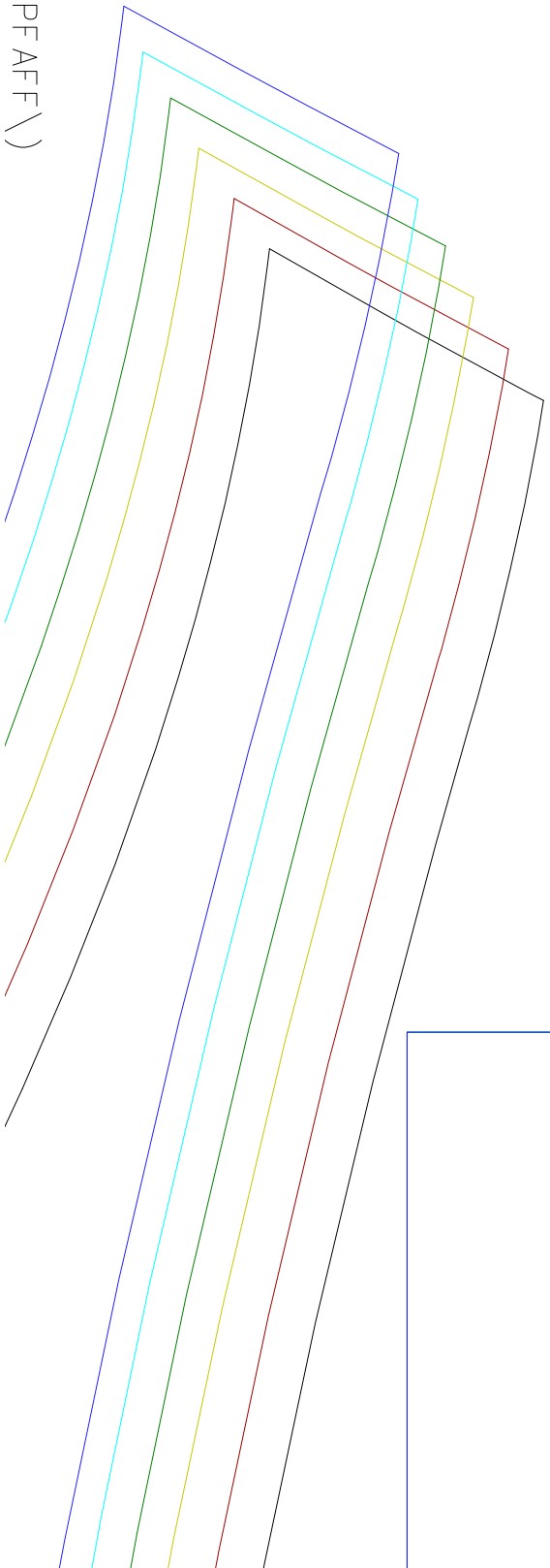
Westen-Rückenteil

(C,04) : Weste.mdl (..XPF AFF X)



Hinterer Beleg
im Stoffbruch schneiden
mit Einlage fixieren

(C,05) : Weste.mdl (.. \PFAFF \)



Paspeltasche
2 x schneiden
und mit Einlage
fixieren